



DRAGON'S TEETH

Heavy Duty, Anti - Vehicle Barrier System



DRAGON'S TEETH

Heavy - Duty Anti - Vehicle Barrier System



The Dragon's Teeth system is a heavy duty, high-resilience, anti-vehicle barrier, engineered to stop armored vehicles, tanks, and other wheeled vehicles, by establishing an impenetrable defensive line.

Construction

Each barrier element is manufactured from 6 mm ballistic-grade steel plates made of Hardox 500, engineered for extreme impact resistance. The internal cavity is fully filled with reinforced concrete, increasing total mass, structural integrity, and resistance to kinetic forces.

Interconnection System

The units are linked together using high-strength steel pipes, forming a rigid locked structure. These connecting pipes cannot be cut with conventional tools, making the barrier extremely resistant to sabotage, mechanical cutting, or field engineering attempts.

Operational Effect

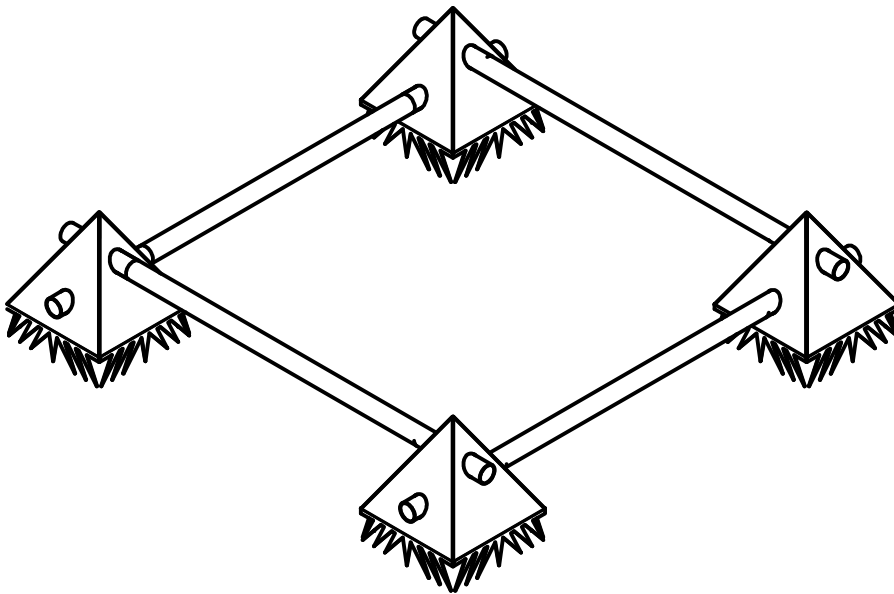
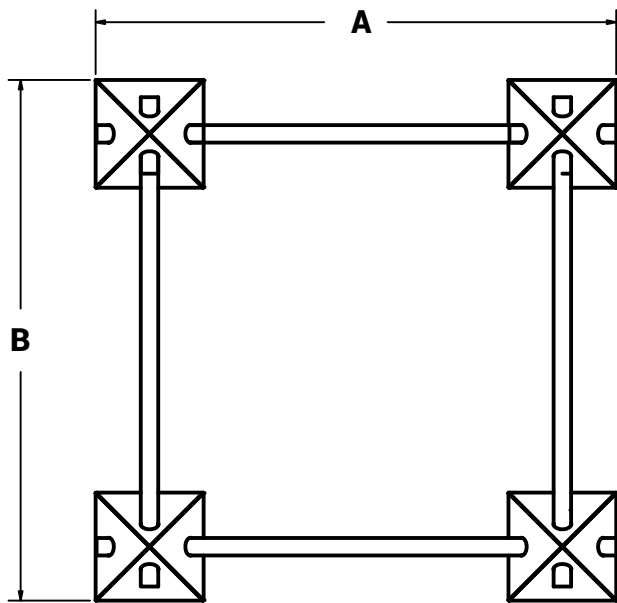
When deployed in a continuous formation, the system creates a solid anti-tank grid, preventing:

- Armored vehicle penetration
- Rapid maneuver by wheeled or tracked platforms
- Breaching with standard engineering equipment

The resulting structure forms an unbroken, hard-to-remove anti-vehicle line, ideal for perimeter denial, border reinforcement, forward defensive positions, and critical infrastructure protection.

PRODUCTION





NCAGE: G3252

General Dimension

| A | B | H | H1 |
|------|------|-----|-----|
| 3400 | 3400 | 700 | 200 |

*dimensions in mm

*dimensions can be customized to the customer's requirements.



MEMBER OF GROUP
URBAN